

Universal Design Conference Sydney, August 2014

Universal Design in Tourism- Put the kettle on

John Evernden,

B. Sc. (Tech.) Civil Engineering; B. App. Sc. Ecotourism;
Accredited Access Consultant

Accessible Public Domain

3 Categories of Universal Design

- “ Universally adopted (traffic lights; Braille)
- “ Universally adapted (Telescope; wheel)
- “ Should/Could be universally adopted or adapted



Should/Could be adopted or adapted

- “ Motels/Hotels**
- “ Tactile banknotes**
- “ Public toilets**
- “ Signage**
- “ Public domain features**

18 Motels/Hotels

- “ Door to Motel Room . 12 hard to operate
- “ Luggage Racks . 12 only one rack
- “ Emergency Plans . None fully accessible
- “ Tea Making - 11 un-friendly
- “ Light over the Bed . 16 had none

Door to Room

- “ Disability (Access to Premises . Buildings) Standards, 2010
- “ Maximum force of **10 Newtons** to open, push and hold open and (2.25 lbs)

Luggage racks



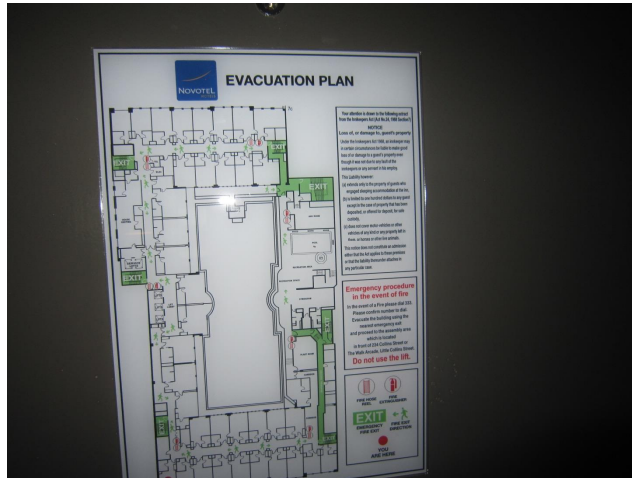
Luggage racks



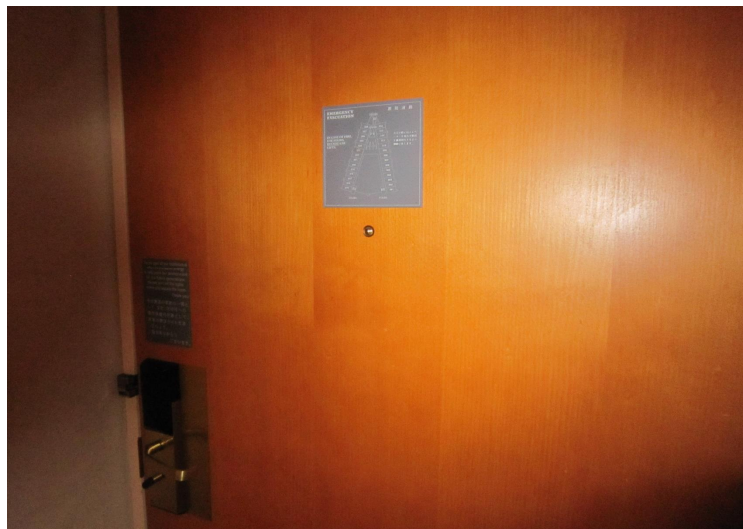
Luggage racks



Evacuation Plans



Evacuation Plans



Put the Kettle on



Put the Kettle on



Light over bed



Tactile Banknotes



Tactile Banknotes

- “ People who are blind
- “ People who are deafblind
- “ People with vision impairment such as macular degeneration (cannot read letters of numbers); colour blindness
- “ People who are ageing
- “ People with a mental health issue such as acquired brain damage

Public Toilets



Public Toilets



Public Toilets



Public Toilets



Public Toilets



Street Name Signs

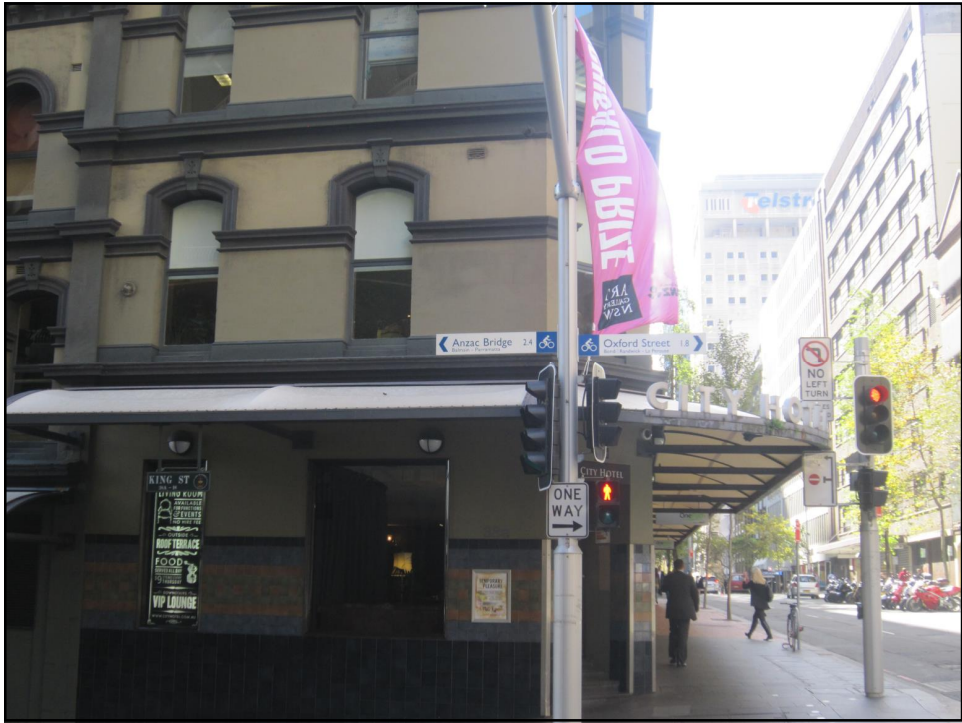


Street Name Signs









New Sydney Tactile Sign



Melbourne Tactile Sign

