

***NSW Disability Inclusion Access Awards  
2017***

**Adult Changing Facilities Grants  
Program**

**Lift & Change Facilities**

**John Evernden**

# Inspections

- 26 sites
- 14 Council Areas
- 11 selected, one in each of 11 Councils
- 15 not accepted
  - Structural difficulties
  - Additional cost
  - Surveillance / security
  - Potential use
  - Attractors

# Official Launch of L&C Project, Mollymook. 8.2.16



# Mollymook



# Macquarie Fields Leisure and Aquatic Centre. 8.5.17



# South Grafton Pool



# Echo Point



# Collaroy Surf Lifesaving Club





# Changing Places Toilets

Lift & Change Facilities

What is the difference?

# **Differences:**

Concept (CPT) / Project(L&C)

Minor differences in dimensions

Inclusions

Accreditation (CPT)

Peninsular Toilet (L&C Preferred)

Responsibility of the Accredited

Access Consultant

## **Both CPT and L&C require:**

Room for a wheelchair plus up to 2 carers

Height-adjustable adult change table

Overhead hoist for full room coverage

Additional Unisex Accessible Toilet

Master Locksmiths Access Key

Accredited Access Consultant

The Changing Places Information Guide and Technical Standard states that Changing Places is a concept, which is recommended for inclusion in major venues. E.g. Shopping Centres, sporting, recreational, cultural, transport, tourist destinations, parks and civic centres

**Lift & Change** is a NSW State Government and Local Government co-funded project, for which a grant is specifically provided to Local Councils for constructing or retrofitting change facilities on Council owned properties. (4 Aquatic Centres, 3 Beachside, 1 VIC, 2 major tourist destinations, 1 Museum)

Facilities constructed to one of the three CP designs, or an acceptable equivalent, can be Accredited.

L&C does not provide Accreditation, but encourages Councils to seek Accreditation if their facilities meet CP guidelines.

L&C acknowledges structural and financial restrictions

Some CP dimensions differ from L&C dimensions, but both comply with the AS1428.1 (2009) range (Change rails)

CP requires a shower screen, and privacy screen in front of the toilet

CP requires a peninsular toilet. L&C will accept a corner toilet where there is insufficient room

The Lift & Change Project has developed a Master Checklist, which sets out what is required for both Changing Places Toilets and Lift & Change Facilities, from access to the facility to Accreditation. The Master Checklist has been made available to every Council in NSW, and is available on the LGNSW website.



# **Accredited Access Consultant Involvement:**

Proposals for CP toilets are referred to the Technical Advisory Group for assistance

L&C engaged an Accredited Access Consultant from the start of the project

# **L&C Accredited Access Consultant:**

Inspect potential sites with Council reps.

Recommend site / seek alternate site

Check attractors; safety, security,  
surveillance; structural alterations; additional  
cost; and paths of travel

Assist in / approve design and quotations

Check on completion.

6 month check on performance

The NSW Government expects L&C facilities to be located where they will be fully utilised, e.g. the VIC site has the following Attractors in the vicinity:

Existing Accessible Toilet, Mothers Room, Baby Change Room, Main City Park, Shopping Precinct, Liberty Swing, Accessible Parking, and an Interstate Bus Stop

L&C looks at the safety of the surrounding area.  
This disappearing step was a known hazard.



The installation of this railing was a condition of the contract for this facility



Campbelltown City Council  
contributed additional funds in  
order to construct a large Adult  
Change Facility at the  
Macquarie Fields Leisure and  
Aquatic Centre

# This Family Change Room was extended to include a smaller Change Room

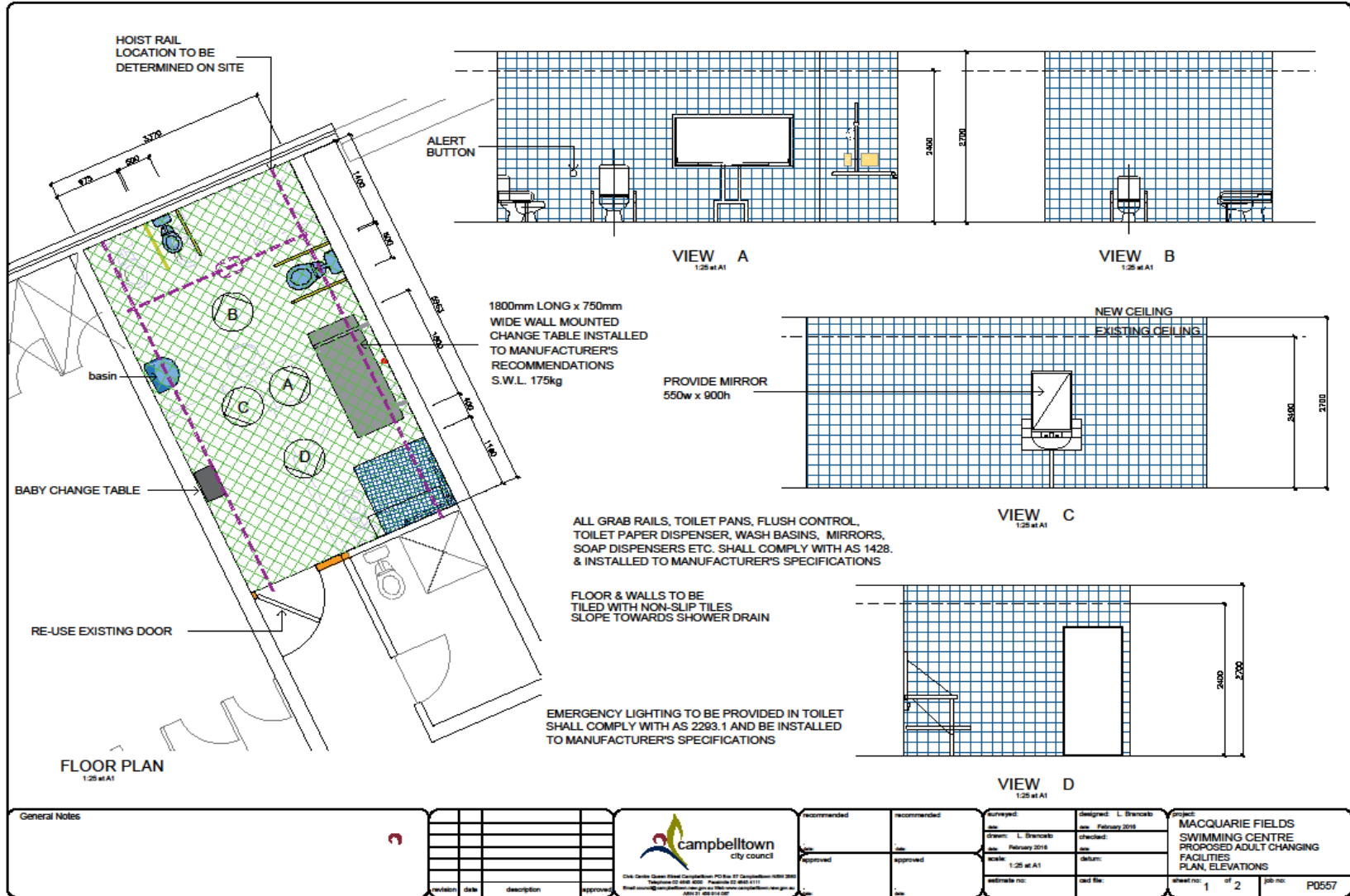


# Smaller Change Room





# Macquarie Fields Leisure and Aquatic



General Notes		recommended	recommended	surveyed	designed: L. Brincala	project: MACQUARIE FIELDS SWIMMING CENTRE PROPOSED ADULT CHANGING FACILITIES PLAN, ELEVATIONS sheet no: 1 of 2 job no: P0557
		approved	approved	checked	checked	
				drawn: L. Brincala	date: February 2018	
				date: February 2018		
				scale: 1:20 at A1	date:	
				estimate no:	cdt by:	

# Macquarie Fields Leisure and Aquatic



# Macquarie Fields Leisure and Aquatic Centre



# Macquarie Fields Leisure and Aquatic Centre



# Changes to BCA / Standards?

- AS1428.1 (2009)
- Empirical testing 18-60
- Mainly 80<sup>th</sup> percentile
- Census + NDIS
- Feedback from CPT and L&C
- Motorised scooters
- Grabrails
- Toilet roll holder

# Echo Point



# Echo Point

