



Annual Report 2019-2020



Chairperson's Report

Background

Centre for Universal Design Australia Ltd (CUDA) was founded early 2016 and established itself as a virtual hub and clearinghouse for research and practice in the areas of universal design, inclusion and accessibility across a diverse range of disciplines. In January 2018 CUDA became a registered charity. All activities are currently undertaken voluntarily by board members and volunteers.

Activities

The goodwill of members and social media followers keep universal design and inclusive practice front on mind in the wider world. Thank you for your persistence. Also, my sincere thanks my fellow board members for the hard work and continuous dedication throughout the year. My thanks also to the volunteers who work on our committees. I look forward to working with you all for yet another productive year. The next section lists CUDA's activities for the year, which of course, were somewhat affected by the COVID-19 pandemic.

Online Learning

CUDA launched a second online learning course, *Home Coming? Framing Housing Policy for the Future* in April 2020. This course aims to help policy makers and others quickly grasp the issues within a complex environment. At the end of June there were 197 enrolments with 68 students receiving completion certificates. The completion rate is approximately 34%.

Our first course, Introduction to Universal Design, continues to be popular. At the end of June 2020 there were 651 total enrolments (440 last year). In total, 295 students received certificates of completion. This gives a completion rate of 45%. Both courses are open access.

Biennial Conference

The biennial conference is a major activity for CUDA. COVID-19 pandemic conditions meant we had to postpone twice, once from May to October 2020 and then to May 2021. The program and speakers were all confirmed before the first postponement. We expect most speakers to continue their commitment to speak in May next year.

We were very pleased to receive forty seven abstracts – more than spaces available in the two-day program. Abstracts were peer reviewed and Griffith University is sponsoring the publication of full papers and extended abstracts.

Papers and conference presentations

In spite of the continuing pandemic, we contributed to several events this financial year.

- Keynote speaker at ACCESS:2019 Conference, Sydney

- Guest speaker at National Association for Women in Construction (ACT)
- Paper presentation at the Institute of Public Works Engineers Australasia Conference
- Guest speaker at ACT Government’s “Having a Home Forum”.
- Guest speaker at Concrete Institute of Australia webinar
- Paper accepted for the Universal Design Conference (Finland)
- Presented a universal design workshop for ACT Government staff
- [Article published in The Conversation](#) on the renovations as stimulus package
- [Contribution to publication](#), Human Rights for People Living with Dementia

Other educational activities

- Post-Polio Australia: Half day workshop on universal design.
- Griffith University Future Learning Group: Seminar on Universal Design for Learning using Zoom videoconferencing.
- The University of Sydney: Panel member for eighty second year architecture students on housing design.
- Guest Critic for University of Sydney Architecture students.
- Festival of Inclusion: Session on supported accessible accommodation

Magazine articles

Four articles were published by Building Connection magazine:

- [The Myths and Magic of Universal Design](#)
- [Universal Design: why wouldn't you?](#)
- [Livable housing: we ain't getting any younger](#)
- [Summary of ABCB's Report on mainstream accessible housing](#)

Submissions and other contributions to public policy

We made two formal [contributions to public policy](#):

- Canterbury-Bankstown Accessible Housing Discussion Paper and a follow up response as requested by Council.
- NSW Housing Strategy Discussion Paper

Working with others

CUDA seeks to collaborate with other organisations with similar aims. This year we joined forces with Western Sydney Community Forum in a submission for an Information, Linkages and Capacity Building (ILC) Grant based on employment of people with disability in the built environment profession. Unfortunately we were not successful.

We continue to support the Australian Network for Universal Housing Design (ANUHD) with their work on mandating access features in all new housing in the National Construction Code. We agreed to collaborate on a project led by University of New South Wales to investigate universal design in packaging and products. This project remains in early stages. We maintained our links with the Western Sydney Leadership Dialogue.

Other activities:

Directors participated in various community consultations, committees, roundtables and specialist workshops. These included the Greater Sydney Commission, City of Sydney Inclusion Panel, and Sydney Olympic Park Authority. CUDA is the host institution for Fulbright Scholar, Emily Steel, who represented us at the Fulbright Australia Gala at Parliament House in Canberra.

Social Media

Weekly newsletter content is posted on Linked In and Facebook, and to a lesser extent on Twitter. The Linked In page has more than 1000 followers and is a good way of keeping universal design topics top of mind. All three platforms bring additional traffic to the website. The most popular posts are usually related to guidelines and conference information.

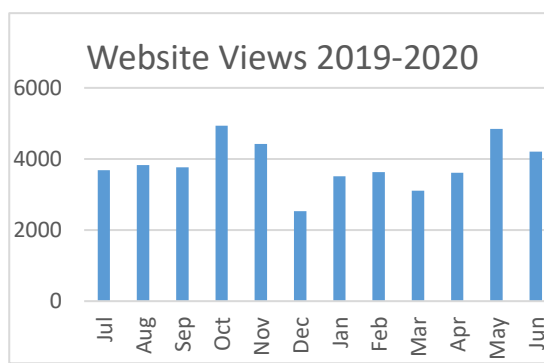
Membership

The perpetual option of Lifetime Membership continues to be popular for individuals who want the convenience of signing up once only. All members are eligible to use the CUDA logo on condition that it is used responsibly. And of course, members are entitled to a discount for the Universal Design Conference and other events.

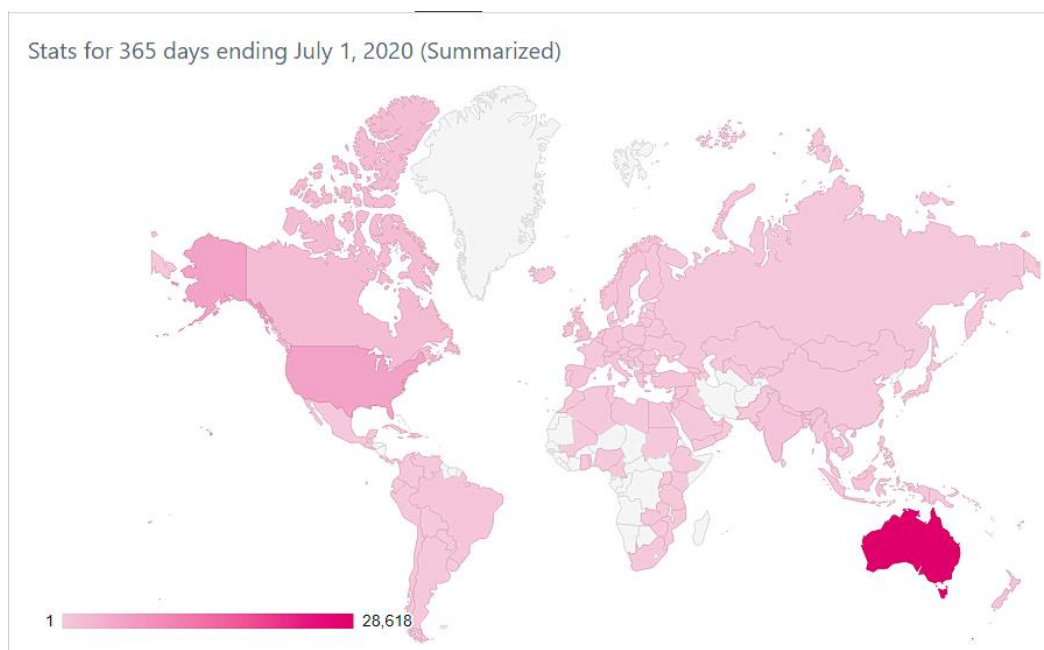
Website statistics for July 2019 to June 2020

CUDA’s website is an important part of operations as a repository of information covering research papers, news items, and opinion pieces on the topic of inclusive practice, accessibility and universal design.

Website views are maintaining at a consistent level with a small overall increase in traffic for the year (46,064 compared to 42,228 last year). The monthly views continue to average around 4000. The number of discrete visits averaged 1700 per month (1450 last year). The charts below show the monthly variations.



CUDA's posts have gained further global reach as shown in the world map below.



Apart from Australia, countries that most visited the site were: United States, Canada, United Kingdom, New Zealand, Ireland, Turkey, India and Spain.

We were pleased to welcome Lizzie Davis to the newsletter team this year. Lizzie's background is in Universal Design in Learning (UDL). She writes a post each week and it is featured in a section of the newsletter headed, "Lizzie's UDL File".

At the end of June 2020, the number of active posts totalled over 1,100, an increase of 300 from the previous year. One hundred outdated posts were retired or updated. Apart from the Home Page, the conference page, and the page linking to Introduction to Universal Design e-learning, the most viewed posts revealed that no particular topic was more popular than another. The 7 Principles of Universal Design was once again in the top ten posts for the year. The topic of autism featured strongly along with the regular posts on conferences and events.

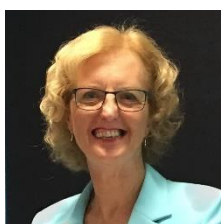
Looking to the Future

We are hopeful that we can hold the UD2020, now UD2021, conference in Melbourne next May. In the meantime we have planned a half day virtual conference for October 2020. We shall continue much as before, promoting the virtues of universal design and the importance of inclusion for everyone.

Dr Jane Bringolf

Chair, Centre for Universal Design Australia Ltd

Board of Directors 2019-2020



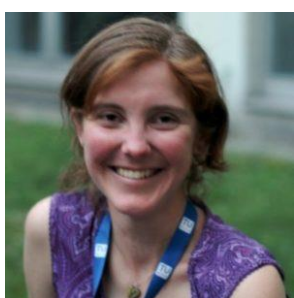
Jane Bringolf: BSc, MBA, PhD, Churchill Fellow (Chair).

Jane has worked in community services for more than thirty years and has a broad understanding of the sector, particularly ageing and disability. A recipient of a Churchill Fellowship in 2004, Jane travelled overseas to investigate organisations pursuing universal design, accessible environments and assistive technology. She later completed a PhD in urban studies focusing on universal design in housing. Jane gained her grounding in universal design as Executive Director with the Independent Living Centre NSW, and put this knowledge to use as Liveable Communities Project Manager with Council on the Ageing NSW (COTA NSW). She now commits her time to CUDA. Jane attended 9 out of 9 meetings.



Phillippa Carnemolla: BlindDes, MDes, PhD

Phillippa is a Senior Research Fellow and Industrial Designer with extensive experience in design practice, research and education. Phillipa has a Bachelor of Industrial Design and Masters of Design (Research) from University of Technology, Sydney, and a PhD from UNSW, Sydney. Her PhD, completed in 2016, investigated the impact of home modifications on caregiving and health-related quality of life. Phillipa's research interests are focused on human-centred and inclusive design of housing, urban infrastructure and new technologies for older people and people living with disability. Phillipa attended 6 out of 9 meetings.



Emily Steel BOccThy, MSc(Hons), PhD

Emily is an Occupational Therapist who has worked as a clinician, manager and researcher in Australia, the United Kingdom and the Netherlands. Her research has investigated policies and practices for implementing disability rights and providing assistive technology in Europe and Australia. Emily is involved in the drafting of new international standards for cognitive accessibility, promoting universal design strategies to make products and systems easier to understand and use. She was awarded a Fulbright Scholarship in 2020 for postdoctoral research to be carried out in the USA. Emily was granted extended leave of absence from the Board and attended 2 out of 4 meetings.



Phillip Taylor: BSc (Hons), MSc, PhD

Philip has over 30 years of experience as an expert researcher, policy writer and governmental and NGO advisor on workforce ageing. His interests include individual orientations to work and retirement, employer behaviour towards older workers and international developments in public policy aimed at extending working life. He holds professorial positions with Federation University Australia and the University of Warwick. Philip attended 8 out of 9 meetings



Penny Galbraith: FAIB, FRICS, PhD

Penny is a built environment professional with a career long interest in accessibility and universal design. Consultancy roles have covered a range of clients and built environment forms including: Underwater World, State Library of Queensland, Princes Pier, master planning senior living villages, NW Rail Link, and more recently helping the City for Greater Geelong determine 'what accessible looks like'. Strategy, research and futures thinking underpin Penny's work. Penny attended 9 out of 9 meetings.



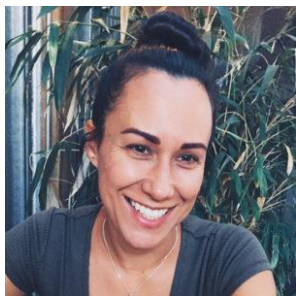
Sarah Davidson

Sarah has a strong background in education and training, particularly in the community sector, relating to health and ageing. Working for peak bodies she has extensive experience in working with volunteers, leading teams, and peer education. Sarah has worked in senior management roles and business development. She is particularly interested in consumer and stakeholder engagement and capacity building within an education framework. Sarah attended 6 out of 9 meetings.



John Evernden: BSc (Tech) Civil Eng; BAppSc Ecotourism

Over many years John has used his civil engineering background at local government level to help create public domains that consider all aspects of equitable and dignified access for people of all ages, capabilities and backgrounds. His skills also include ecotourism and the sustainability of the natural environment as well as the built environment. John is also an accredited access consultant. John attended 9 out of 9 meetings.



Tanisha Cowell BOccThy (Hons), AdvDip Interior Design

Tanisha is an occupational therapist who has turned her hand to access consulting and has a special interest in architecture and the built environment. She has a strong interest in universal, biophilic and active design and believes that should be the foundation of all built environments. Tanisha has direct experience working with individuals with disability, and indirect experience working in disability access. Based in Victoria, Tanisha is a consultant with Equal Access Group. Tanisha was granted leave of absence from the Board and attended 3 out of 7 meetings.

Centre for Universal Design Australia Ltd

Income and Expenditure Statement

for year ended 30 June 2020

	2019-2020		2018-2019
INCOME	\$		\$
Bal b/fwd	2,056.29		1646.18
Membership fees	3,521.07		3115.62
Donations	1,063.21		110.00
Other income -			
Advertising Newsletter	220.00		330.00
Workshop/event fees	0		465.48
Consulting fees	1,649.55		0
Bank Interest	4.65		12.92
TOTAL INCOME	6,458.48		5,680.20
EXPENSES			
Meeting Expenses	209.90		349.19
Web hosting fees	626.07		0
Open Learning Fees	228.00		0
Travel	0		0
Membership Fees	108.90		0
ASIC Fees	0		1224.00
ATO GST	190.00		0
Insurances	1,164.23		1098.28
Misc Expense	220.00		0
TOTAL EXPENSES	2,747.10		3,623.91
Income less expenses	3,711.38		2,056.29

Cash at bank as at 30 June 2020 was \$5,767.67. Membership fees, donations and consulting fees were the major income items. A new Zoom account formed the meeting expense, and insurances was the major expense this year. Web hosting fees and Open Learning fees were previously donated. Membership fee was for Western Sydney Community Forum.